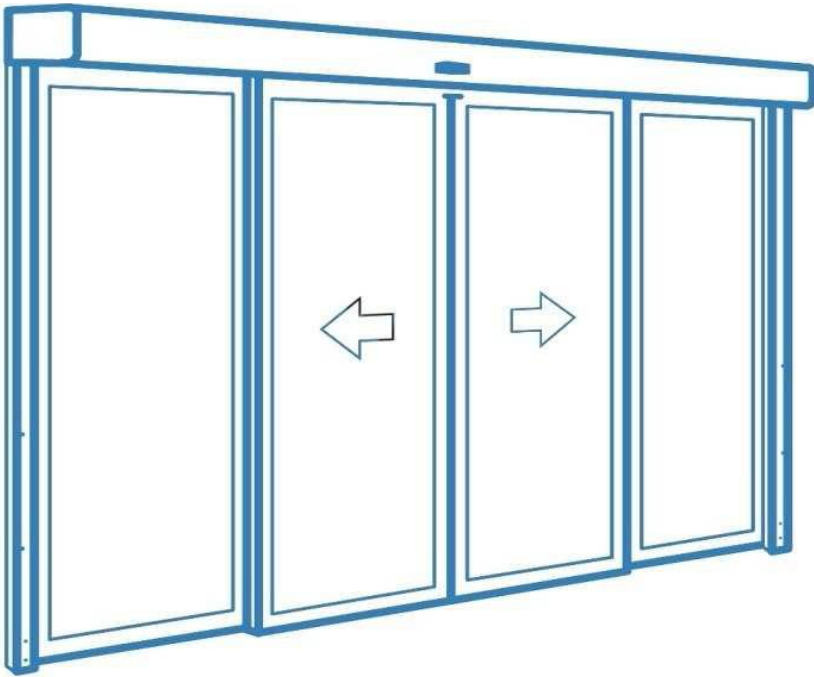


EXPERT

Turkiye's First and Only Twin Motor Gearless Automatic Door System

INSTALLATION USER MANUEL



 **schmelz**
AUTOMATIC DOOR SYSTEMS

www.schmelz.com.tr

CONTENTS

- 1. TECHNICAL SPECIFICATIONSPage 03
- 2. INSTALLATION INSTRUCTIONS. Page 04
 - 2.1 MECHANISM AND ACCESSORIES. Page 04
 - 2.2 MECHANISM AND CASE ACCESSORIES. Page 05
 - 2.3 INSTALLATION STEPSPage 07
 - 2.4 E20 LEAF INSTALLATION Page 12
 - 2.5 I30 LEAF INSTALLATION Page 14
- 3. ELECTRICAL CONNECTIONS. Page 16
 - 3.1 EXPERT CONNECTION SCHEME. Page 16
 - 3.2 PHOTOSSEL CONNECTION. Page 17
 - 3.3 RADAR CONNECTION. Page 17

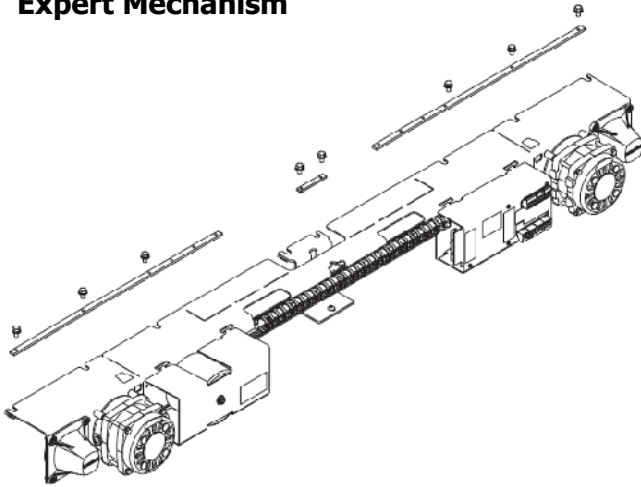
1. TECHNICAL SPECIFICATIONS :

- *Mechanism height 10 cm.
- *The belt system that provides the movement of the doors is operated by double motor.
- *There is a battery system that will open to the door once the power is cut off inside the door.☐
- *Each wing can move at a speed of 1400 mm / sec to allow the door to open quickly.
- *Set open time 0 - 30 sec. .
- *The opening speed of the doors is higher than the closing speed.
- *The mechanism is working with 2x90 kg wings. (The moving capacity for single-leaf door is 100 kg.)
- *The mechanism automatically determines the opening and closing distances when the machine is switched on.
- *When the mechanism is required, the FM receiver can be remotely controlled by being equipped with a transmitter system.
- *Radar works with live and inanimate objects in the same microwave system.
- *Radar sensitivity settings are made with the setting knob on the radar.
- *The photoreceptor placed at the midpoint outside the impact area of the radar is prevented from touching the object wings in this area.
- *The aluminum to be used is painted with electrostatic powder paint in a color suitable for the needs.
- *Full sealing is provided with wings to be used even in the sash.
- *All moving and fixed wings are made of 8 or 10 mm thick transparent, lacquer resistant laminated glass.
- *The doors are closed and locked by means of the position switch. This position contains the functions of off (Disable), automatic (all system activated), open (door open), one way (motion unit one way), night (locked from inside, switchable from inside).
- *Operating voltage 230 V (A.C), 50 Hz. And exhibits at least 10% tolerance to voltage-free melter.
- *The movable wings are opened manually if required in the power cuts.
- *The impactor has a system that prevents moving wings from raiding. (Each wing is supported by 6 wheels on it, of which 4 are rails and 2 are rails.) There is no time to move the rails on the wheel.

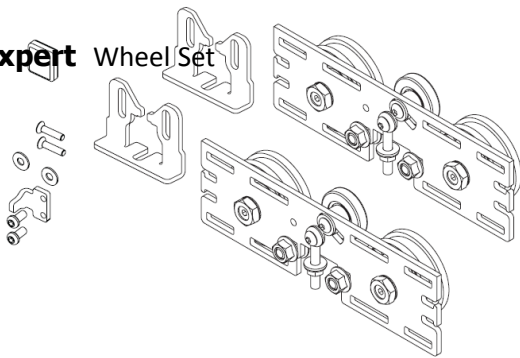
FEATURES	EXPERT (DOUBLE MOTOR)
Control	Keypad
Opening speed	100 - 150 cm/sn.
Kapanma hızı	30 - 80 cm/s.
Closing speed	120 cm
Maximum transit width (double wing)	200 cm
Maximum transit height	240 cm
Maximum wing weight	90Kg / Wing
Wing speed acceleration value	1.4 m/s ²
Wing closure power	140 N
Güç kaynağı	230V-50 Hz
Maksimum tüketim	150 W
Mekanizma yüksekliği	10 cm

2. INSTALLATION INSTRUCTIONS: **2.1 Mechanisms and Accessories :**

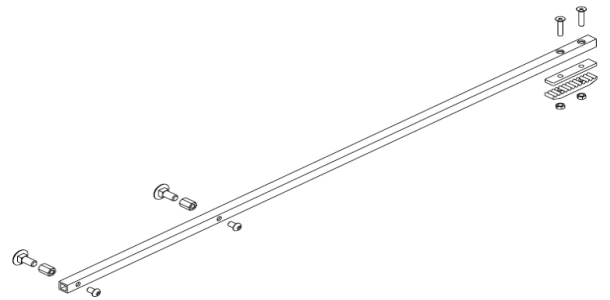
Expert Mechanism



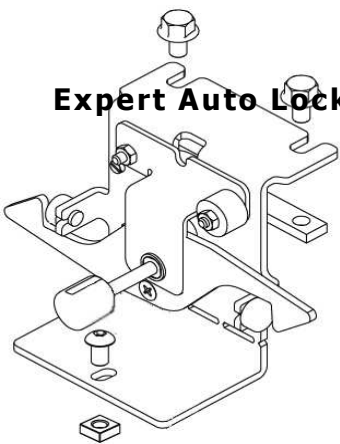
Expert Wheel Set



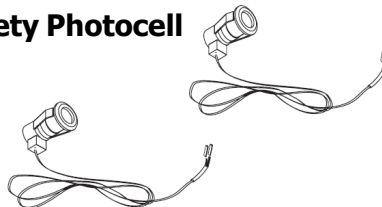
Expert Wheel Arm



Expert Auto Lock

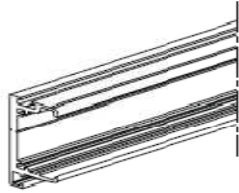


Safety Photocell

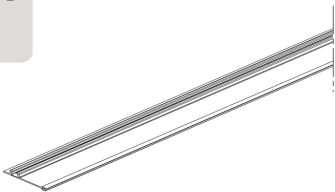
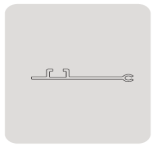


2.2 Mechanism and Case Accessories

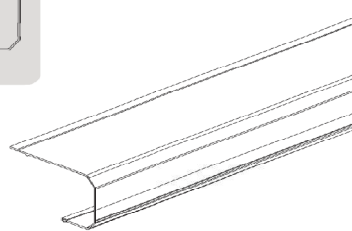
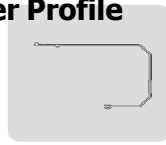
Case Profile



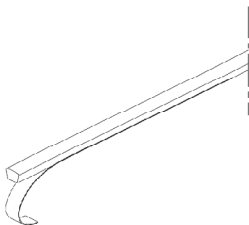
Bottom Cover Profile



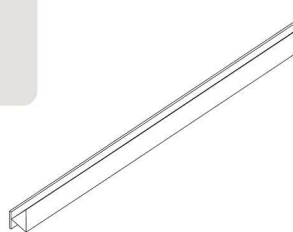
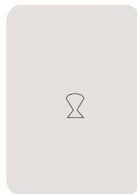
Medium Cover Profile



Wheel Rail Profile



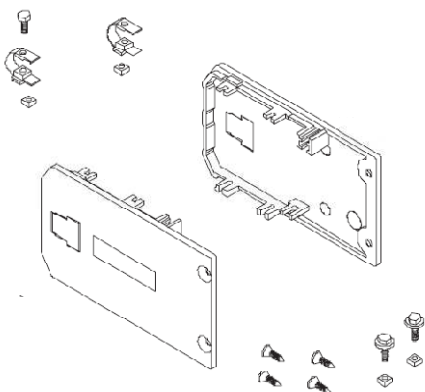
S e a l



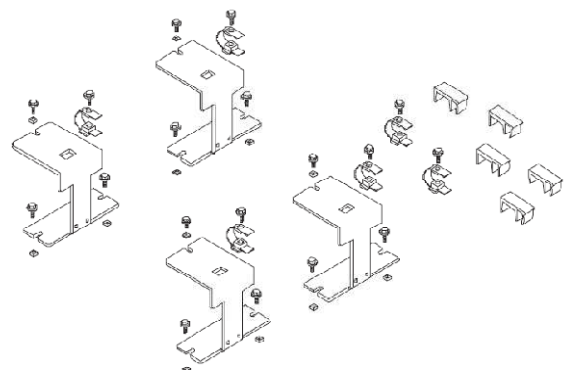
Cover Rubber



Black Side Cover

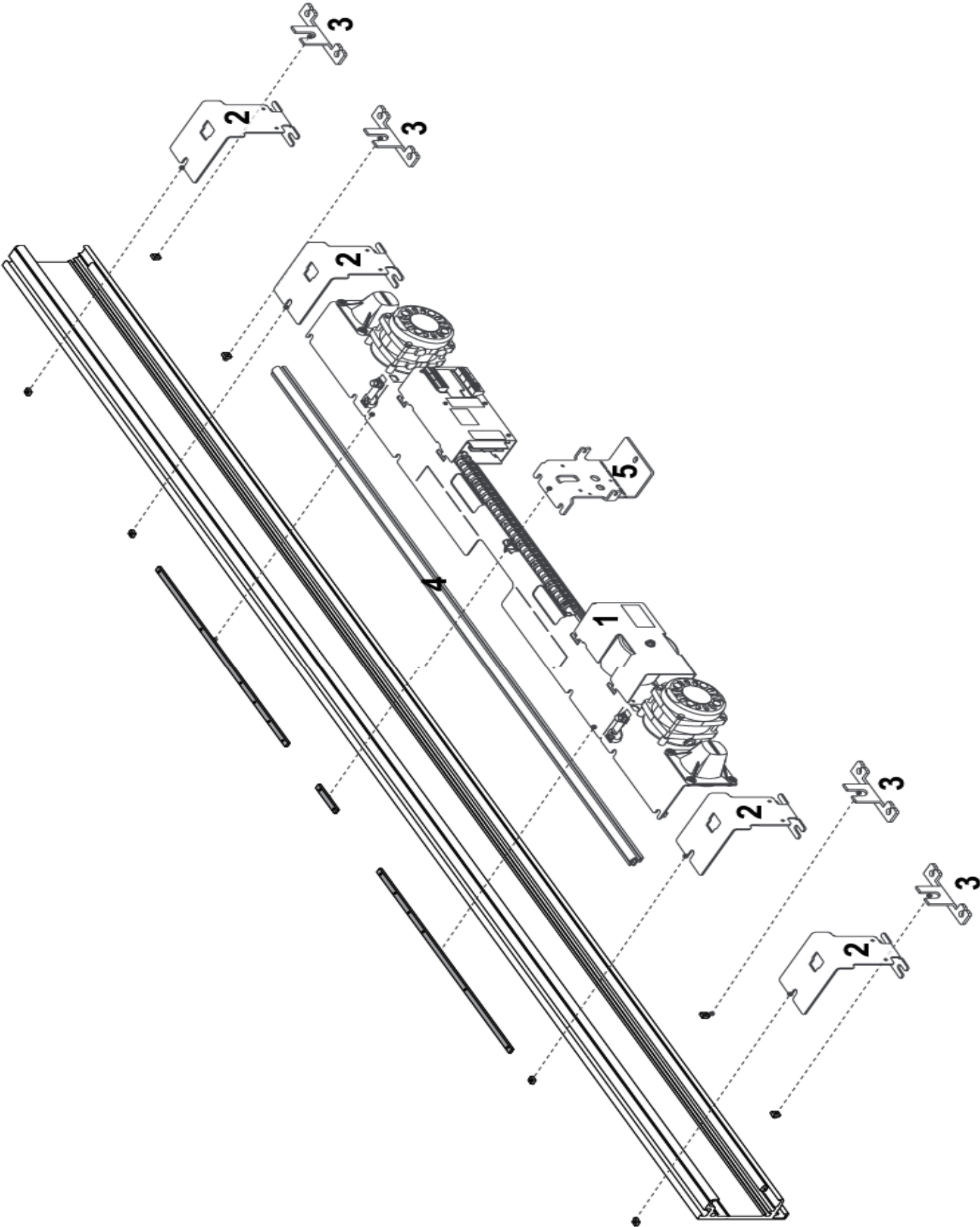


Internal Connection Set



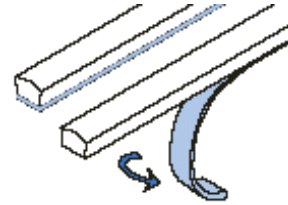
1- Engine Group
2- Internal Connection Set
3- Fix Kit for Fixed Wing

4- Closed Profile
5- Automatic Locking Device

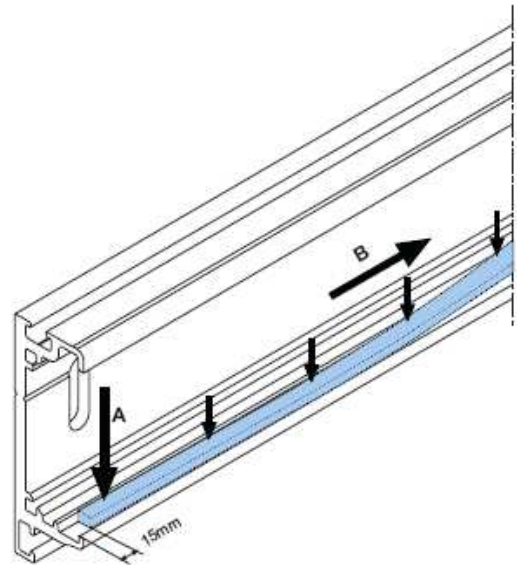


2.3 Mounting Steps

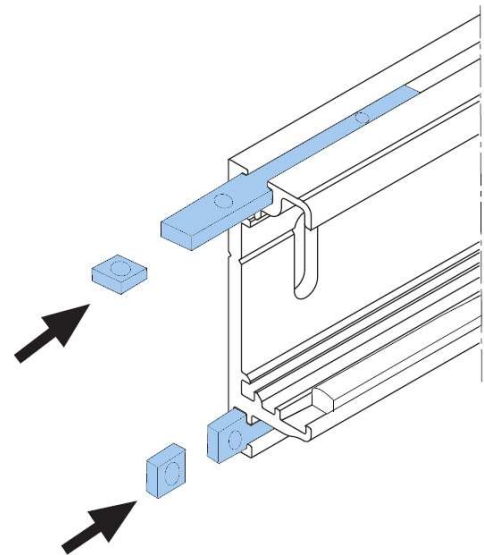
1. Double-sided wheel rail profile construction Construction on wheel rail.



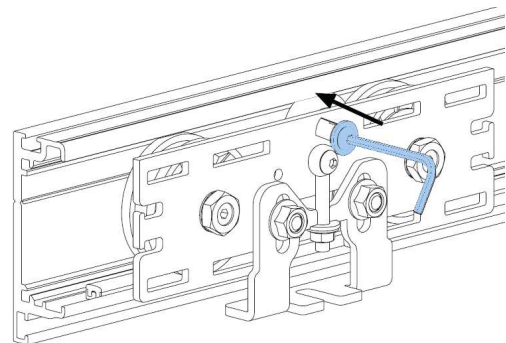
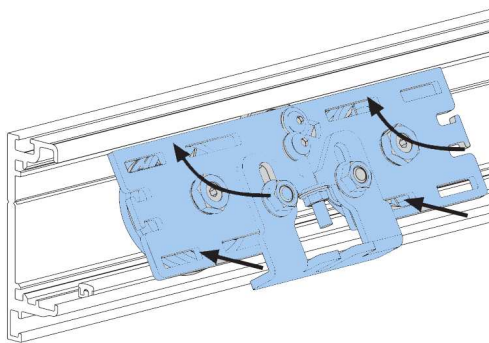
2. Construct the wheel rail to the cradle.



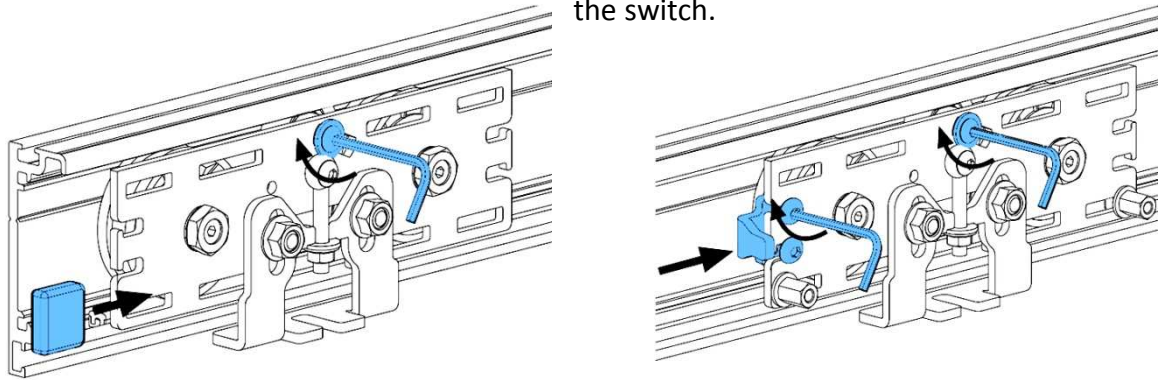
3. Place the connecting elements in the cage as shown in the grid on the A network.



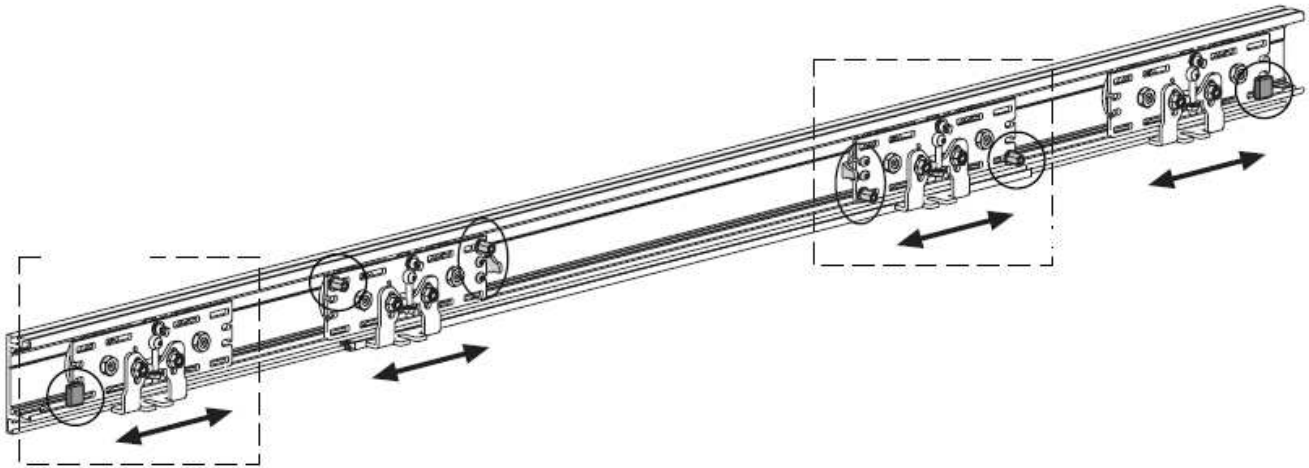
4. Place the wheels in the cradle as shown below



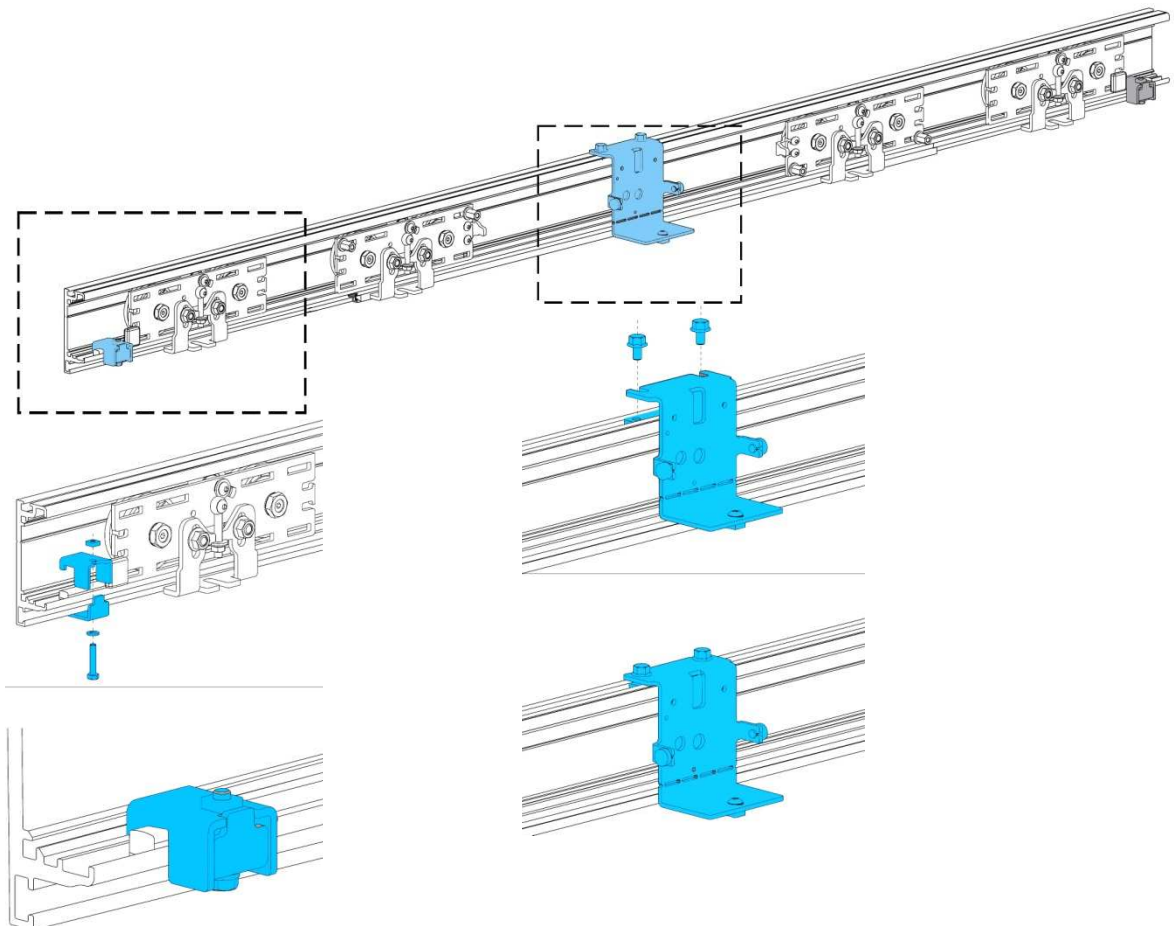
Adjust the Adjusting Wheel using the whisker and tighten the nuts of the Fixed Wheels with the switch.



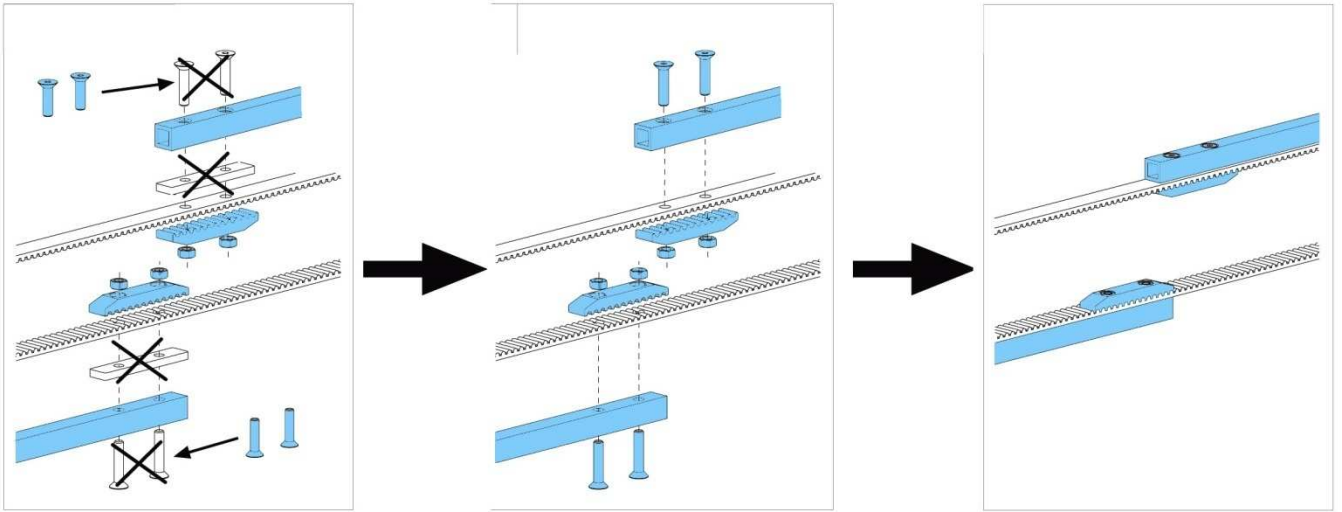
5. Once the wheels are assembled, they must be able to move freely within the enclosure and be firm enough not to come off the wheel rail



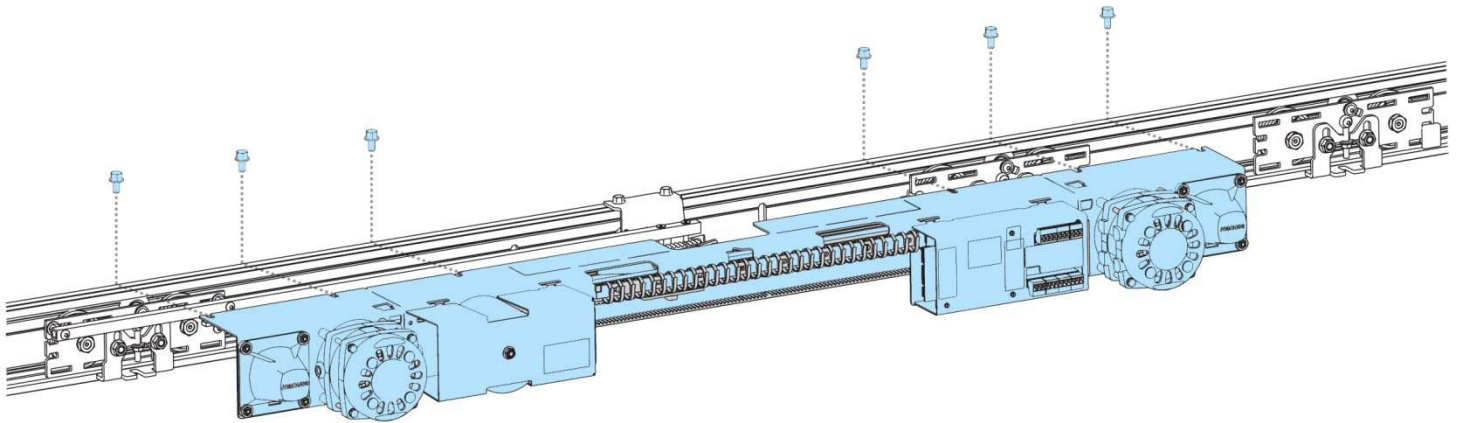
6. Install the stop yoke and lock securing apparatus as shown



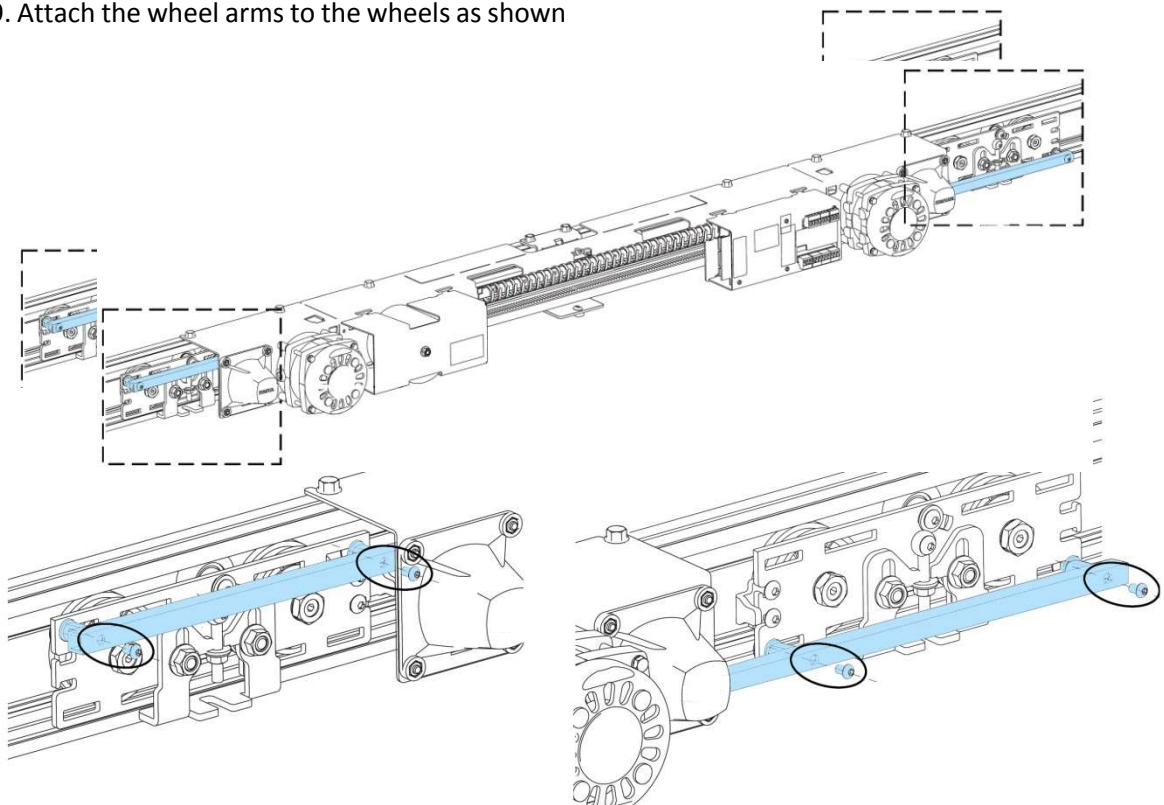
7. Attach the wheel arms to the mechanism in Mechanism as shown.



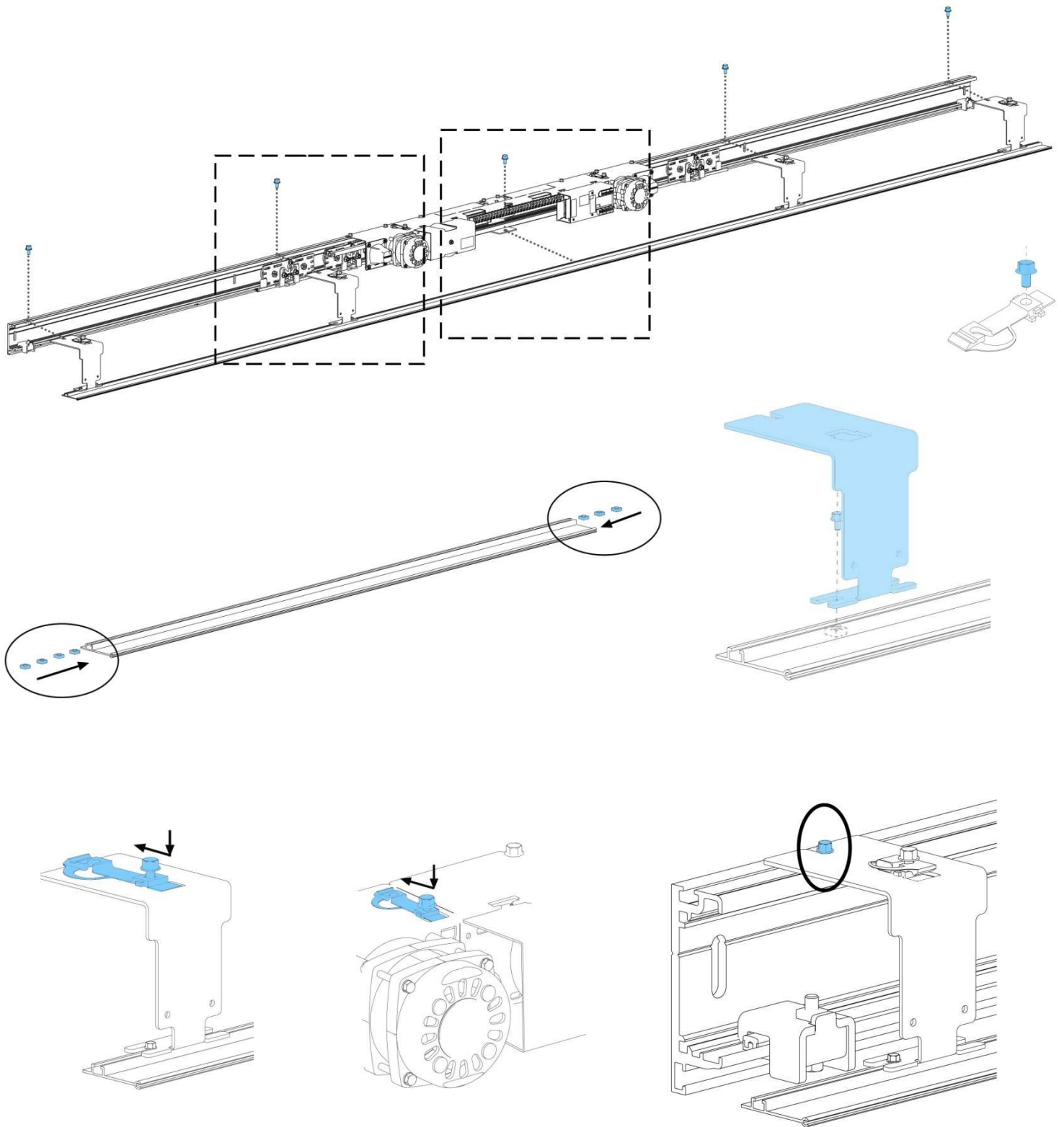
8. Using the fasteners mentioned in step 3, place the mechanism into the muscle

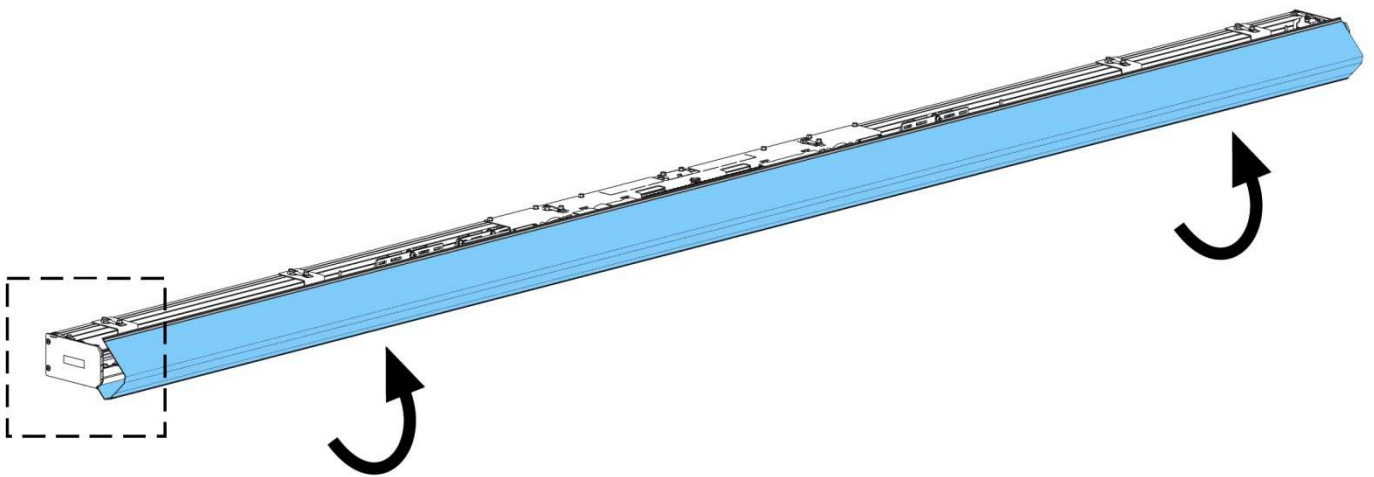
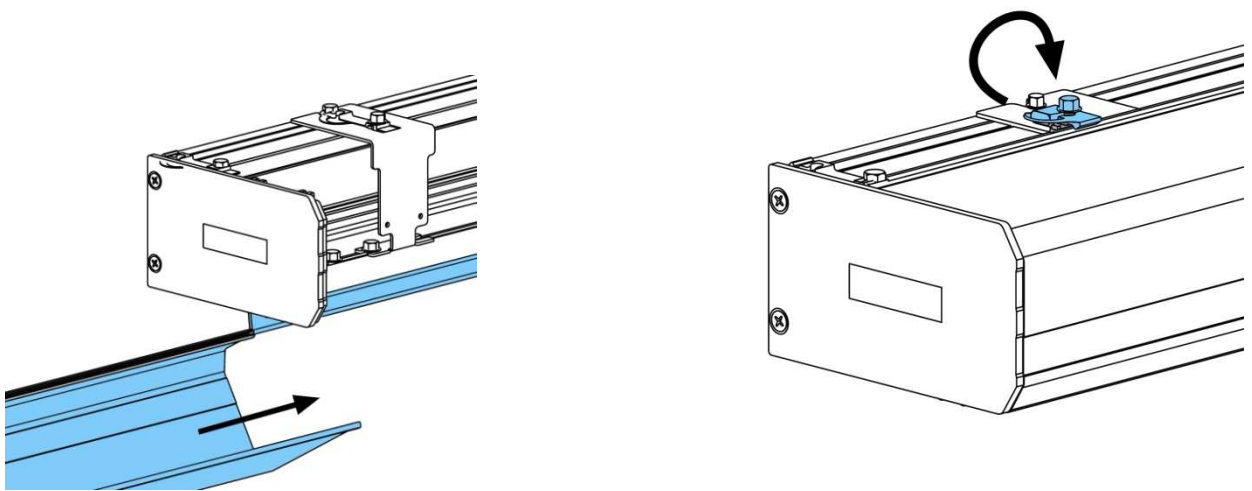
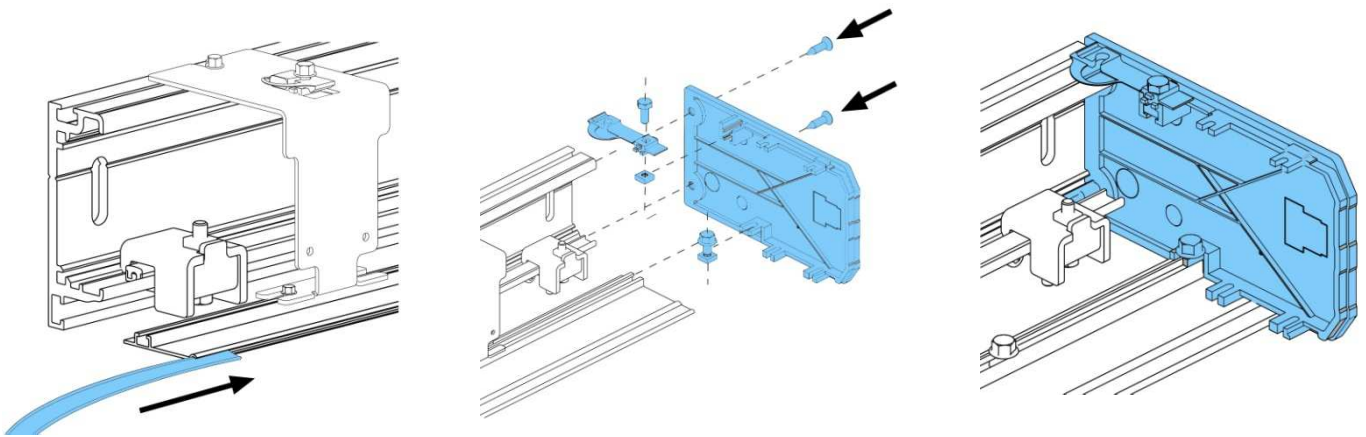


9. Attach the wheel arms to the wheels as shown



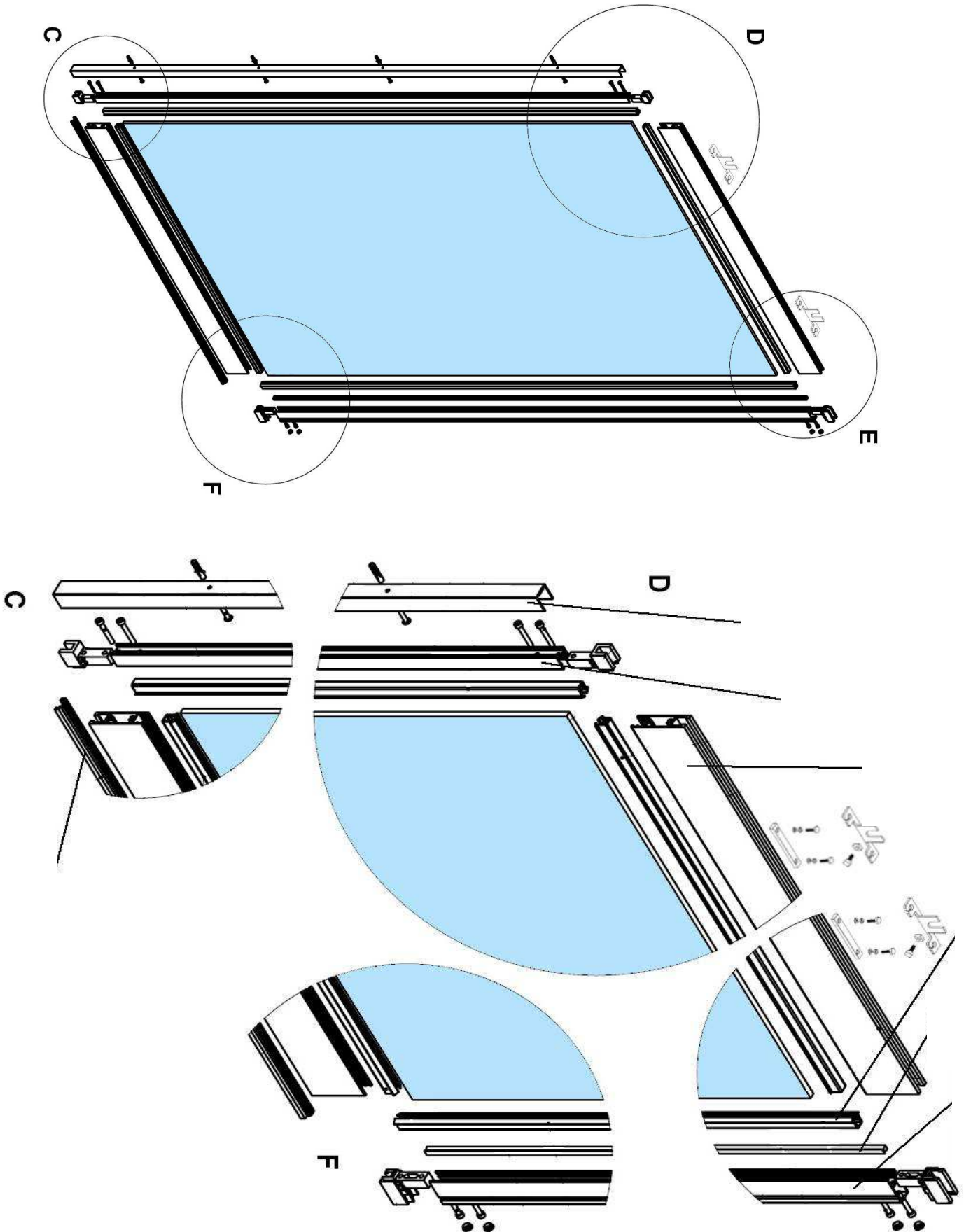
10. Install the covers and other accessories as shown

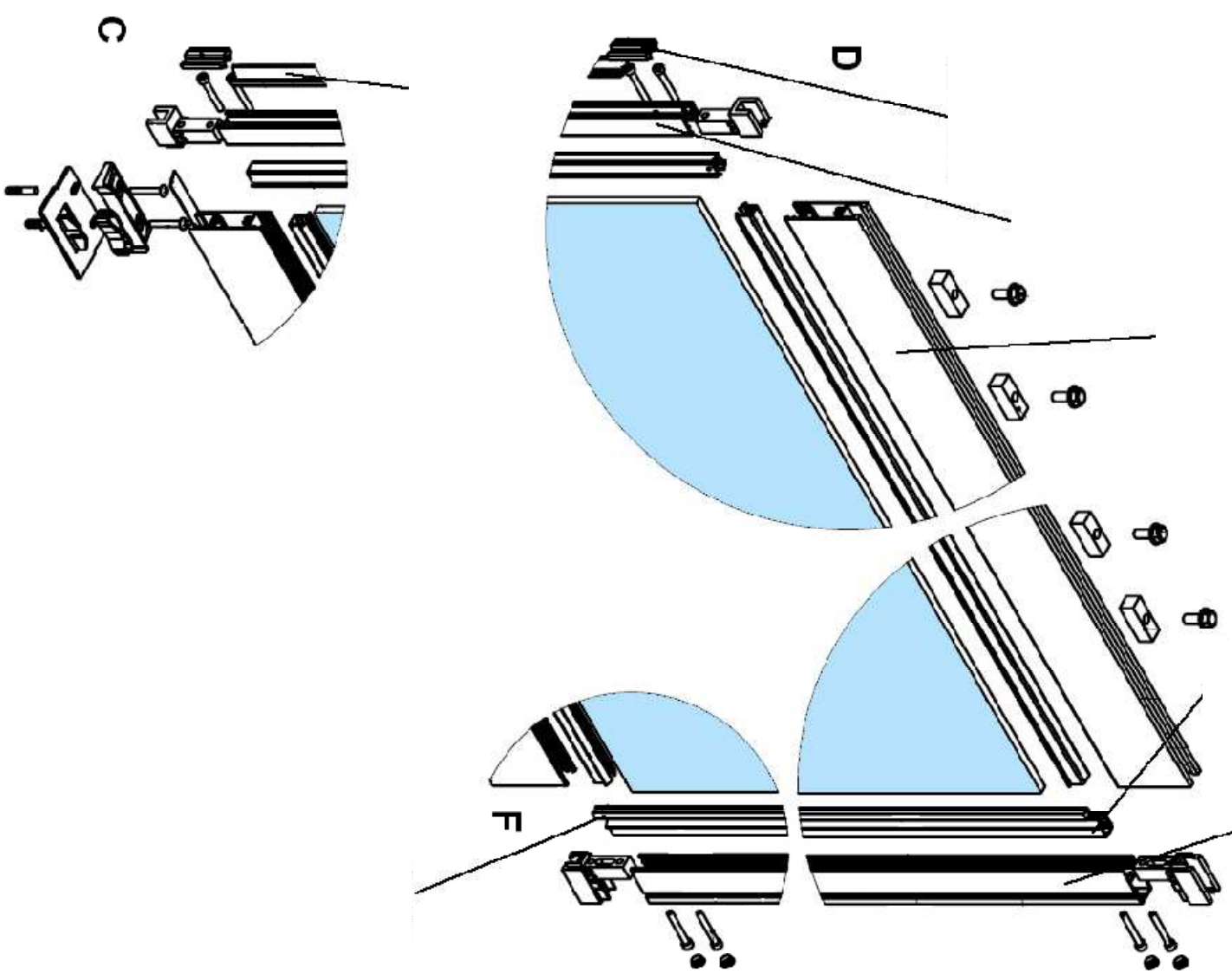
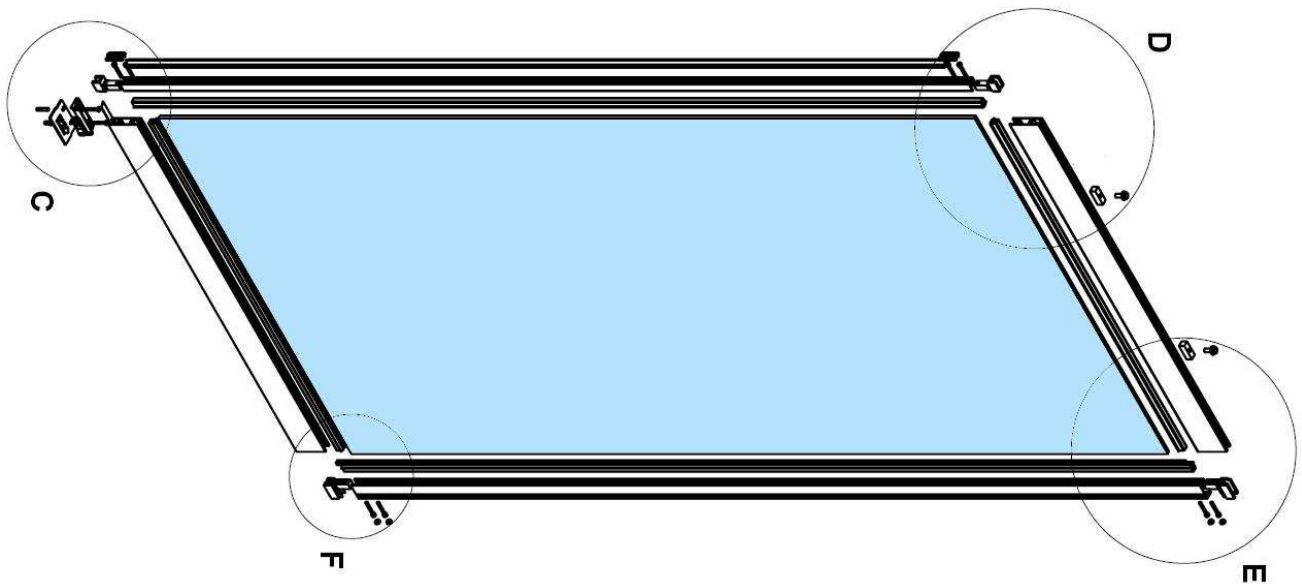




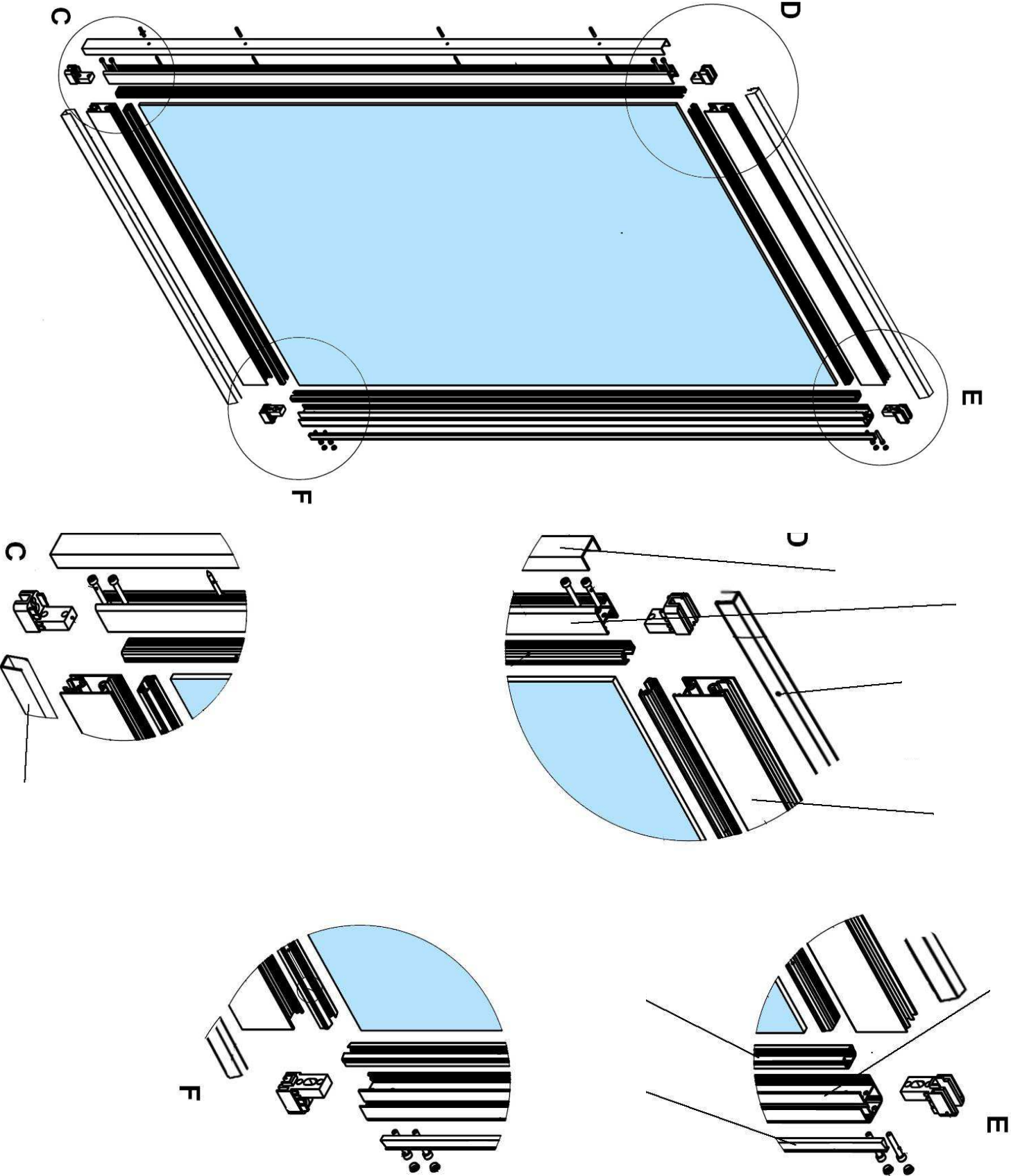
2.4 E20 Leaf Installation :

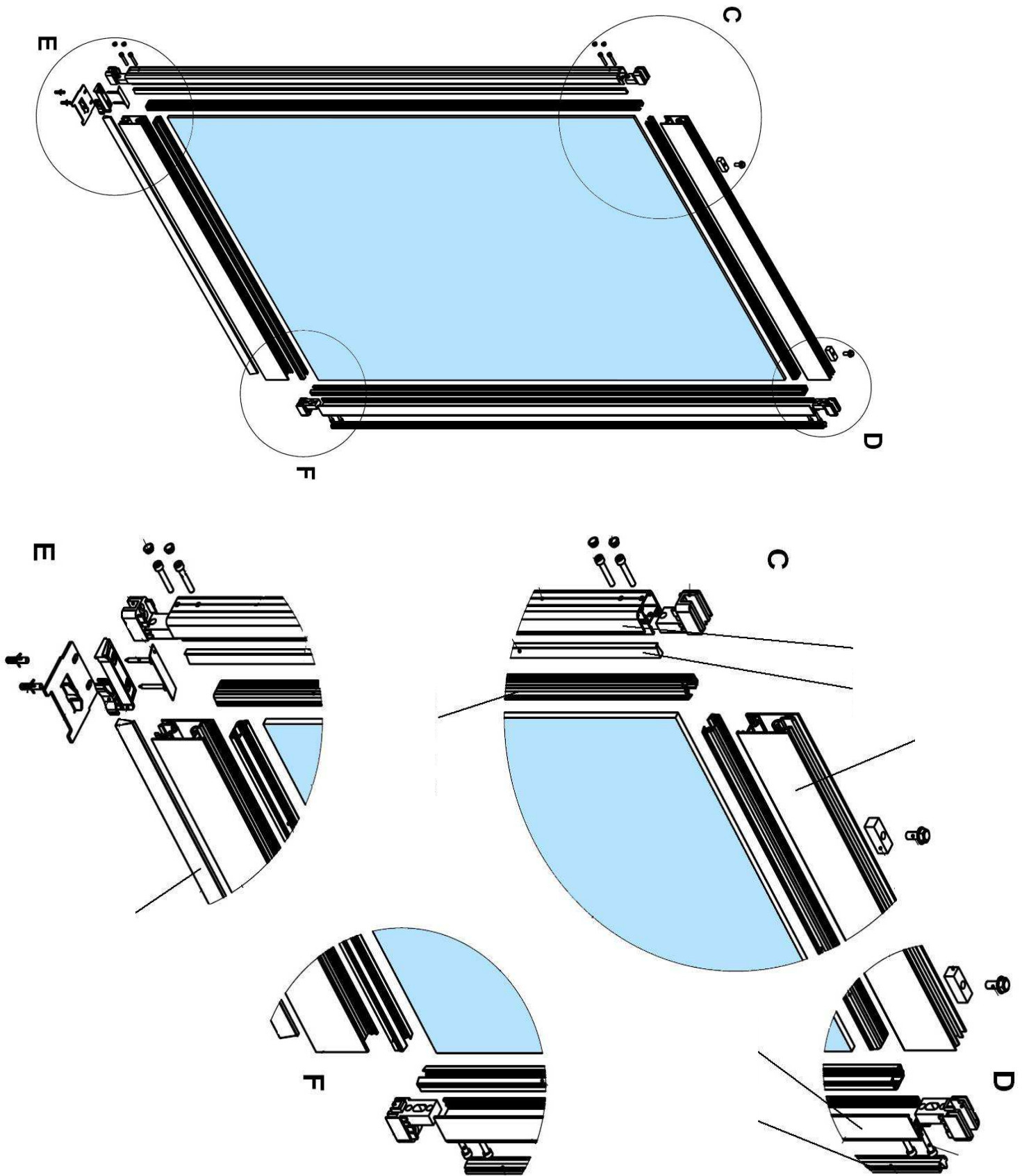
Fixed Wing :





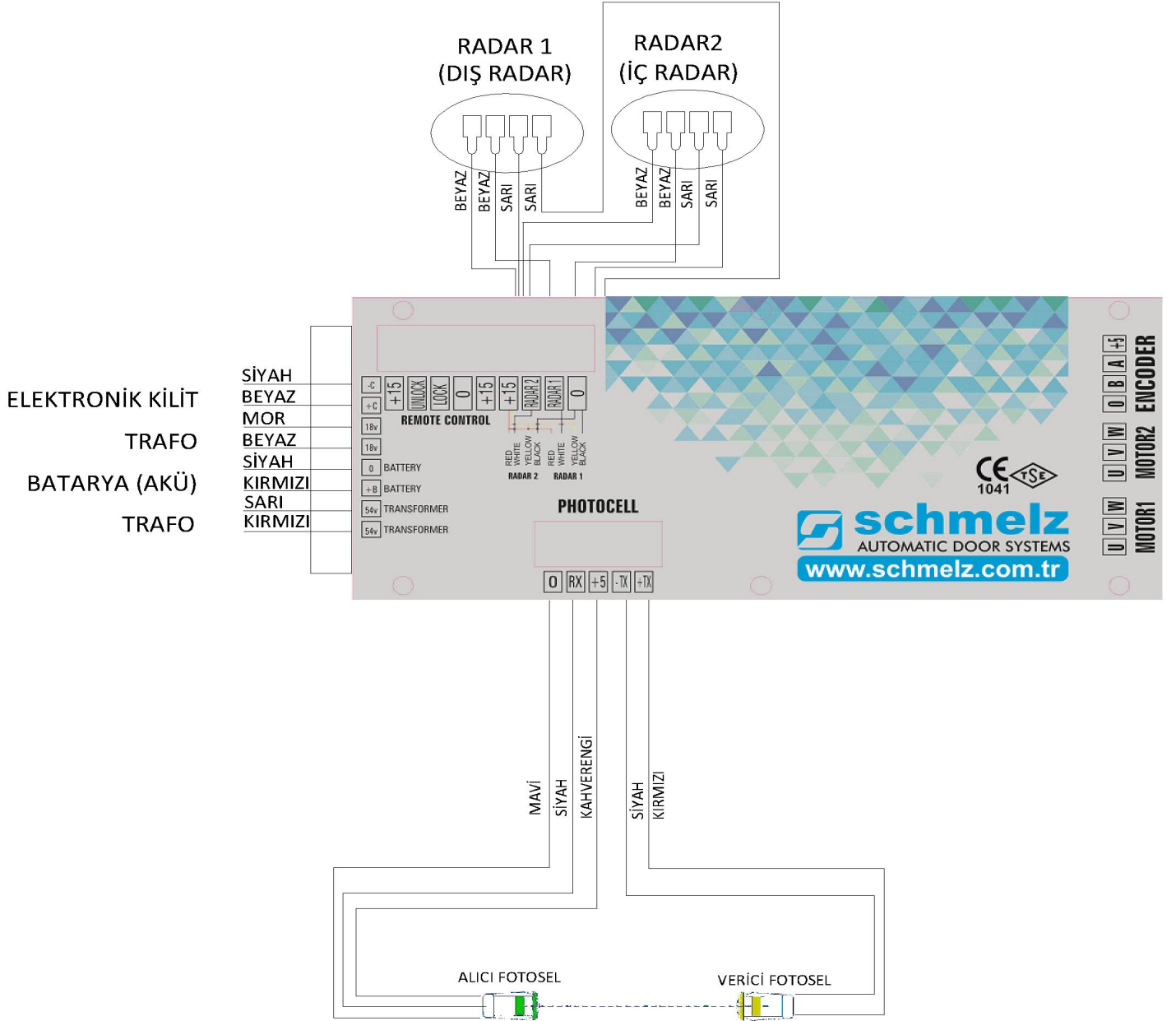
2.5 I30 Leaf Installation:





3. ELECTRICAL CONNECTIONS



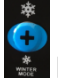




3.1 Connection diagram



KONUM ANAHTARI KULLANIMI






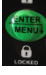




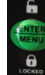






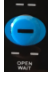




Ana Ekran Kullanım:

- 1- Konum anahtarı üzerindeki kırmızı tuşa  basılıp resimdeki gibi tek ok  görseli ekranda çıktığında dış radar devre dışı duruma gelir. Kırmızı tuşa bir kez daha basıldığında çift ok görsel ekranda çıkar ve 2 radar da çalışır duruma gelir.
 - 2- Konum anahtarı üzerindeki Mavi tuşa  basıldığında kar tanesi resmi  görünür. Kapı kış moduna geçmiş demektir. Kapı artık açıldığında kullanıcının belirlediği oranda yarım şekilde açılacaktır. Aynı tuşa yine basıldığında güneş resmi çıkar ve kapı normal çalışma moduna dönmüş olur.
 - 3- Kapı normal çalışma modunda iken ekranda kapı kapalı işareti  görünür. Konum anahtarı üzerindeki Mavi tuşa  bastığımızda kapı açık işareti ekranda belirir ve kapı açık konuma geçer. Açık konumdayken kanatlar motor yükünden boşa çıkar.
 - 4- Kapı normal çalışma modundayken ekranda kilit açık işareti  görünür.
- Yeşil tuşa  bastığımızda kapı kilitli duruma geçer. Eğer mevcut ise elektromekanik kilit, kilitli duruma geçer.

Ayar Menu Kullanım:

Konum anahtarı üzerindeki kırmızı menü tuşu  ve yeşil menü tuşuna  aynı anda 2sn. basılı tutulduğu zaman servis menüsü olan ayar menüsüne girer.

- 1- Ekranda çıkan **DİL SEÇENEĞİ** değiştirilmek istendiğinde; yeşil menü tuşuna  bir sefer basılı ekrandaki yazının yanıp sönmeye başlaması sağlanır. Yanıp sönen yazıyı konum anahtarı üzerindeki artı  ve eski  tuşları ile değiştirebiliriz. İstenilen seçeneğe gelindiğinde tekrar yeşil menü tuşuna  basılıp istenilen seçim yapılır. Sonraki ayar seçeneğine geçmek için artı  tuşuna basınız.
- 2- Ekranda çıkan **AÇMA HIZI** değiştirilmek istendiğinde; yeşil menü tuşuna  bir sefer basılı ekrandaki yazının yanıp sönmeye başlaması sağlanır. Yanıp sönen yazıyı konum anahtarı üzerindeki artı  ve eski  tuşları ile değiştirebiliriz. İstenilen seçeneğe gelindiğinde tekrar yeşil menü tuşuna  basılıp istenilen seçim yapılır. Sonraki ayar seçeneğine geçmek için artı  tuşuna basınız.
- 3- Ekranda çıkan **KAPAMA HIZI** değiştirilmek istendiğinde; yeşil menü tuşuna  bir sefer basılı ekrandaki yazının yanıp sönmeye başlaması sağlanır. Yanıp sönen yazıyı konum anahtarı üzerindeki artı  ve eski  tuşları ile değiştirebiliriz. İstenilen seçeneğe gelindiğinde tekrar yeşil menü tuşuna  basılıp istenilen seçim yapılır. Sonraki ayar seçeneğine geçmek için artı  tuşuna basınız.
- 4- Ekranda çıkan **BEKLEME SÜRESİ** değiştirilmek istendiğinde; yeşil menü tuşuna  bir sefer basılı ekrandaki yazının yanıp sönmeye başlaması sağlanır. Yanıp sönen yazıyı konum anahtarı üzerindeki artı  ve eski  tuşları ile değiştirebiliriz. İstenilen seçeneğe gelindiğinde tekrar yeşil menü tuşuna  basılıp istenilen seçim yapılır. Sonraki ayar seçeneğine geçmek için artı  tuşuna basınız.

EXPERT



FETHİYE MH. FATİH SK. AKDENİZ PLAZA

NO:21/B NİLÜFER / BURSA / TÜRKİYE

TE L: +90 224 443 00 96

FAX : +90 224 443 00 29

www.zenke.com.tr

info@zenke.com.tr

www.schmelz.com.tr